

Eco-Leather & Fabric
Indoor collection

**chairs&
more**

Giovane azienda nata nel 2007 con l'obiettivo di rispondere alle moderne esigenze del mercato contract, **Chairs & More** da subito si propone al mercato internazionale con le sue collezioni dal design estremamente lineare come la poltroncina So Pretty e le sedute in poliuretano Gotham.

L'attenzione per il comfort, la qualità dei materiali e la produzione accurata consentono all'azienda di crescere rapidamente proponendo ogni anno nuove collezioni e ottenendo riscontri da parte del mercato e della stampa internazionale che ne riconoscono la forte personalità e l'impegno costante nella ricerca di nuovi concept.

Nel 2014 **Chairs & More** si apre a collaborazioni con giovani designer, nascono così la collezione Churros disegnata da Kazuko Okamoto che interpreta il concetto di modularità di seduta in modo radicale, e, per la prima volta, la collezione Jujube dedicata all'outdoor disegnata da Antonio de Marco e Simone Fanciullacci. Da allora, l'azienda, è continuamente impegnata a sviluppare nuovi prodotti selezionando giovani e talentuosi designer tra cui Tommaso Caldera, con il quale vince il secondo premio Young Design 2017 con la poltroncina Mousse al Salone del Mobile di Milano, e lo studio Pastina di Roma con la nuova collezione Chips. Dalla collaborazione con Roberto Paoli nascono invece le collezioni Babah e Nube, quest'ultima realizzata con un innovativo poliuretano morbido FreeForm.

"Ci rivolgiamo a chi sceglie il design ma non perde di vista la comodità, a chi è attratto dall'originalità ma non vuole l'eccesso, a chi ricerca la qualità e apprezza la disponibilità a collaborare riconoscendo che il servizio è una componente fondamentale di ciò che viene offerto".

Marco Roseano

Young company founded in 2007 to respond to the modern needs of the contract market, **Chairs & More** immediately presents itself to the international market with its linear design collections such as the So Pretty armchair and Gotham chair.

The attention to comfort, the quality of the materials and the careful production allow the company to grow rapidly by offering new collections every year and obtaining feedback from the market and the international press that recognizes their strong personality and constant commitment to search for new product concepts.

In 2014, **Chairs & More** starts the collaboration with young designers: Kazuko Okamoto designs the Churros collection, which interprets the concept of modular seating, Antonio de Marco and Simone Fanciullacci design the Jujube for outdoor use. Since then, the company has been continuously committed to developing new products by selecting young and talented designers like Tommaso Caldera, winning the second award at the Young Design 2017 with the Mousse armchair presented at the Salone del Mobile in Milan, and the Pastina Design Studio with the Chips collection. Roberto Paoli designs the Babah collection, in rigid polyurethane, and the Nube collection, with the seat in innovative FreeForm soft polyurethane.

"We turn to those who choose design but do not lose sight of comfort, to those who are attracted by originality but do not want excess, to those who seek quality and appreciate the willingness to collaborate, recognizing that service is a fundamental component of what is offered".

Marco Roseano

Betibù

Dario Delpin
Cat. A/B/C/D
catalogue pag 20



Chips

Studio Pastina
Cat. A/B/C/D
catalogue pag 32



Flora

Studio Pastina
Cat. A/B/C/D
catalogue pag 48



Gotham SLI

Dario Delpin
Cat. A/B/C/D
catalogue pag 60



Gotham Woody-I

Dario Delpin
Cat. A/B/C/D
catalogue pag 66



Jujube SP-A/B

Antonio De Marco & Simone Fanciullacci
Cat. A/B/C/D
catalogue pag 78



Jujube INT

Antonio De Marco & Simone Fanciullacci
Cat. A/B/C/D
catalogue pag 84



Jujube D-D INT

Antonio De Marco & Simone Fanciullacci
Cat. C
catalogue pag 88



Mousse

Tommaso Caldera
Cat. A/B/C/D
catalogue pag 97



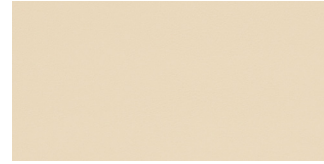
So-pretty

Dario Delpin
Cat. A/B/C/D
catalogue pag 114



Cat. A

secret



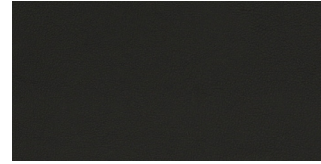
1003



1025



1015



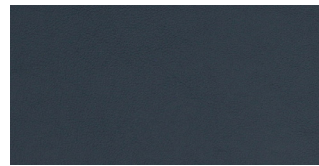
1017



1027



1012



1014



1009

angel



56/201



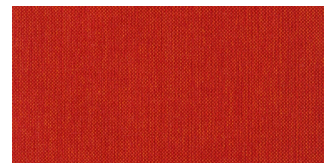
57/200



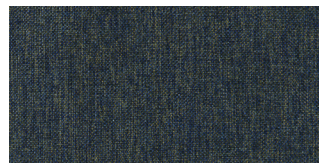
20/405



54/401



35/305



39/700



41/502



38/002

caliente



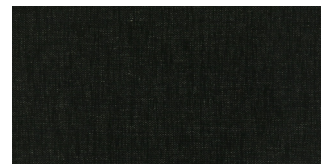
400



605



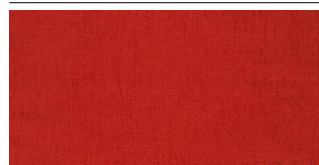
405



200



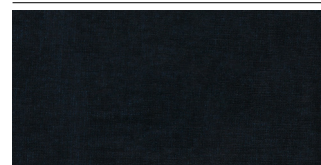
500



309



801



705

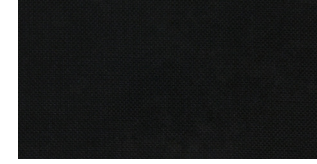
angel combo



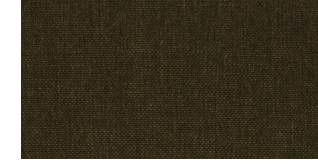
600



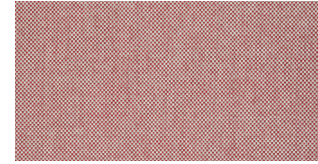
203



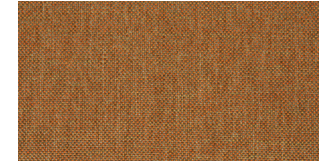
702



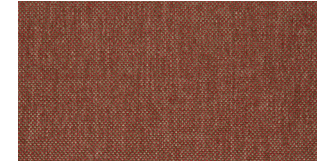
404



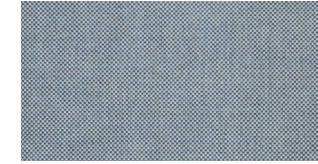
301



308



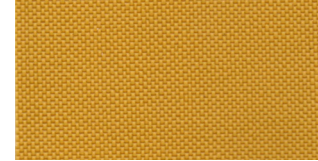
302



701

Cat. B

magnum tex



501



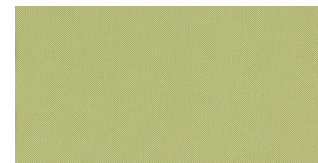
300



806



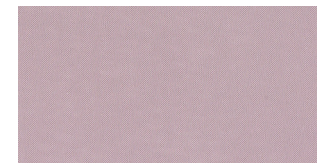
601



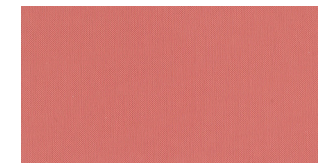
803



706



901

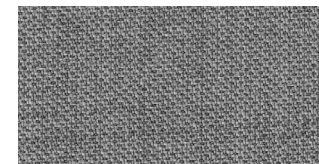


902

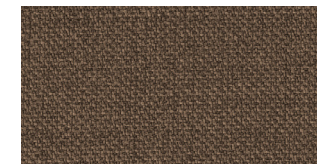
tailor



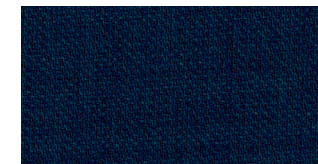
250



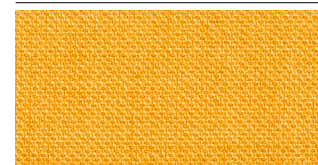
350



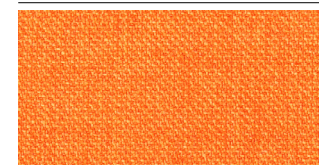
950



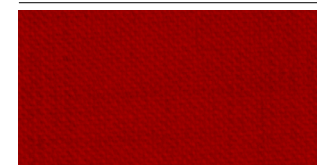
2350



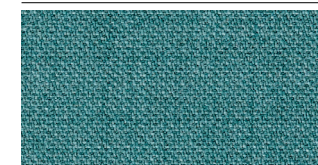
1150



1250



1350



1850

Cat. C

opera



101



600



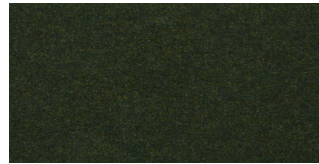
201



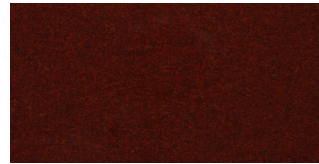
200



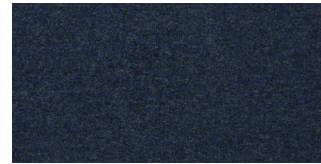
402



800



305



700

aida



400



805



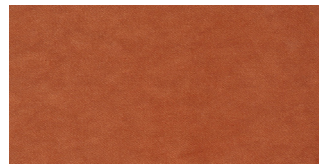
604



600



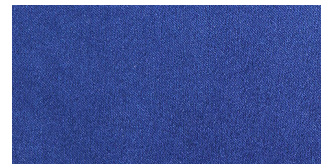
703



900



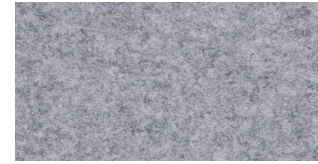
305



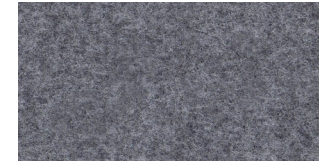
712

Cat. D

blazer



cuz28



cuz1e



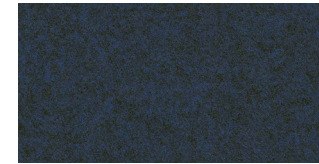
cuz12



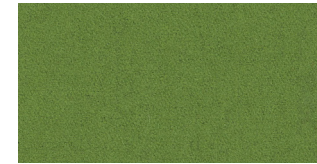
cuz08



cuz13



cuz1w

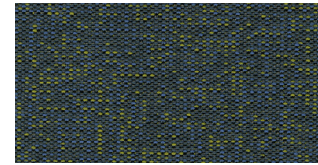


cuz53

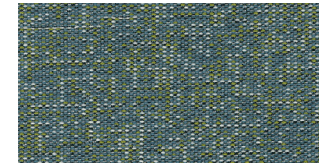


cuz2w

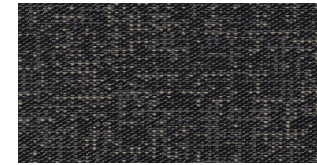
galaxy



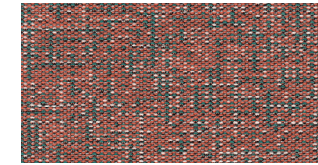
42



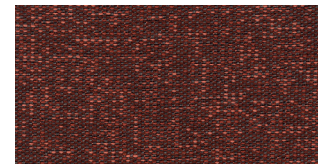
49



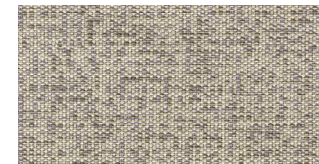
55



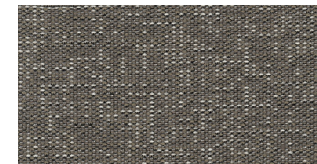
60



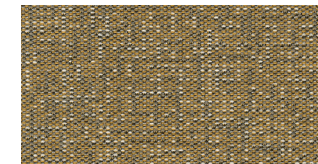
22



05



11



20

Chairs & More si riserva di apportare, senza preavviso, modifiche nei materiali, nei rivestimenti, nelle finiture e nei disegni dei prodotti presentati in questo catalogo.

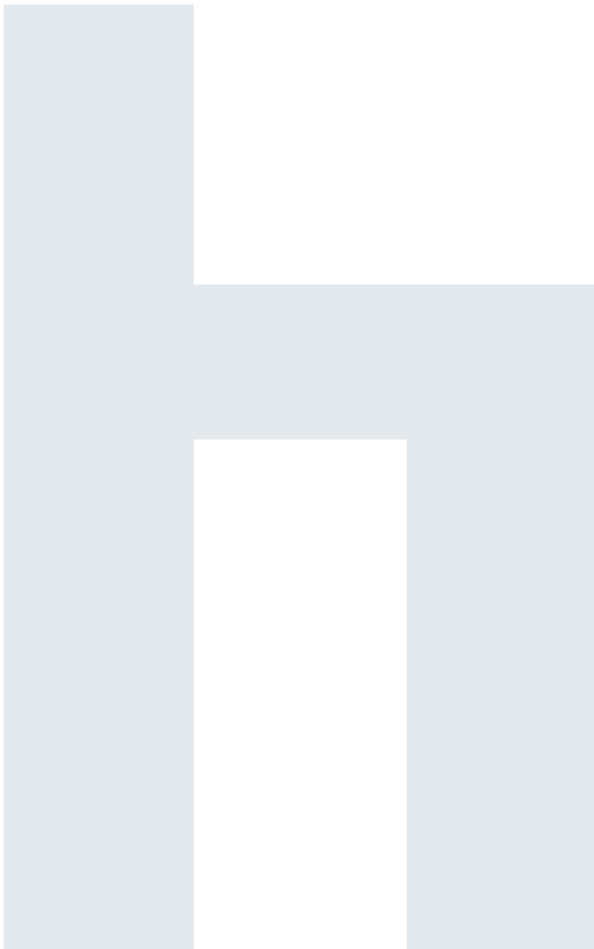
Le textures ed i colori dei materiali e delle finiture hanno valore indicativo in quanto soggetti alle tolleranze dei processi di stampa.

Se desideri ricevere i campioni di tessuto e finitura, puoi richiederli a questo indirizzo e-mail:
info@chairsandmore.it

Chairs & More reserves the right to change, without previous notice, materials, covers, finishes and drawings of the products presented in this catalogue.

The textures and colours of materials and finishes are indicative as they are depending on the tolerances of the printing process.

If you wish to receive fabric and finish samples, you can request them at this e-mail address:
info@chairsandmore.it

**Graphic design & layout**

Marco Sorrentino
MSstudio.it

Copyright 2020
© Chairs and More s.r.l.
all rights reserved

Chairs & More si riserva di apportare, senza preavviso, modifiche nei materiali, nei rivestimenti, nelle finiture e nei disegni dei prodotti presentati in questo catalogo. Le textures ed i colori dei materiali e delle finiture hanno valore indicativo in quanto soggetti alle tolleranze dei processi di stampa.

Chairs & More reserves the right to change, without previous notice, materials, covers, finishes and drawings of the products presented in this catalogue. The textures and colours of materials and finishes are indicative as they are depending on the tolerances of the printing process.

Chairs & More s.r.l.

Via dell'Artigianato, 18
San Giovanni al Natisone,
33048 Udine – Italy
+39 0432 743271

info@chairsandmore.it
chairsandmore.it

ed. VI—20

Chairs & More s.r.l.

Via dell'Artigianato, 18
San Giovanni al Natisone,
33048 Udine – Italy
+39 0432 743271

info@chairsandmore.it
chairsandmore.it